

# LP Gas Hose Reels

| Home Delivery Trucks | Dispensing Systems | Fueling Vehicles |  
| Filling Stationary and Portable Cylinders |



**You Can't Buy  
A Better Reel.**

Family owned and operated since 1933

# Series **PBGMB/PBGMT**

## To handle single 1" or 1-1/2" I.D. hose.

- Standard hose reel is steel construction, painted graphite. Aluminum or stainless steel construction is available.
- "SB" prefix denotes polished aluminum construction, offering both reduced weight and superior corrosion resistance compared to standard steel construction.

### Both Series

- Choose #40 chain and sprocket drive powered by an electric, hydraulic or compressed air motor or direct drive hydraulic rewind motor.
- Auxiliary crank rewind standard on Series DPB reels. Available on Series PB power rewind reels, at extra cost.
- Direct drive hydraulic rewind reels supplied with pinion brake. Electric powered rewind reels supplied with a strap brake.
- Other brake and locking devices may be specified. (See Ordering & Accessory Guide.)
- Standard inlet: 90° ball bearing swivel joint, 1-1/2" female NPT threads.
- Standard outlet: flanged riser, 1" female NPT threads.
- Standard inlet, outlet riser, hub assembly are steel.
- Other sizes and/or threads can be furnished and must be specified.
- Pressures to 350 psi (24 bar).
- Temperatures from -40°F to +350°F (-40°C to +177°C).
- Consult factory for other pressures and temperatures.
- Chain guard available upon request, must be specified.
- Refer to page 10 for more information on Guidemaster® shown.

### Series PBGMB

- The Assembly B bottom wind roller is standard.

### Optional Guidemaster® EPS-1 Switch Cover



Hannay Part No. 9917.0201. This cover is designed to protect against moisture and other contaminants and has a durable lanyard to keep the cover securely attached to the switch body.



**Series PBGMB with Bottom-Mounted Guidemaster®**  
Electric rewind shown



**Series SBPBGMB with Bottom-Mounted Guidemaster®**  
Polished Aluminum and electric rewind shown

### Series PBGMT/SBPBGMT with Guidemaster® Mounted on Top

Prefix becomes "PBGMT" (steel construction) or "SBPBGMT" (aluminum construction).

See chart on Page 7.



# Series PBGMB/PBGMT

## PARTS DRAWING: BOTH SERIES PBGMB and SERIES PBGMT – ISO 202, 204 and ISO 195, 200

Model Number For Power Rewind see Note 3	Hose Capacity of Reel feet m		Approx. Weight Power Rewind lb. kg		Reel Dimensions*** in. mm													
	I.D. in. mm	1 25	NET	SHIP	A	B	D	E	F POWER	F DIRECT DRIVE HYD	G	H	J	K	L	M	X	Y
	O.D. in. mm	1.5 38																
<b>PBGM B 24-23-24</b>	<b>125</b>	<b>160</b>	<b>185</b>		<b>21</b>	<b>15.5</b>	<b>20.5</b>	<b>22.75</b>	<b>29.25</b>	<b>35.12</b>	<b>23.5</b>	<b>12.12</b>	<b>49</b>	<b>36.75</b>	<b>30</b>	–	<b>13</b>	<b>16.75</b>
	38	73	84		533	394	521	578	743	892	597	308	1245	933	762	–	330	425
<b>PBGM B 30-23-24</b>	<b>150</b>	<b>170</b>	<b>200</b>		<b>27.5</b>	<b>22</b>	<b>20.5</b>	<b>22.75</b>	<b>35.75</b>	<b>41.62</b>	<b>23.5</b>	<b>12.12</b>	<b>49</b>	<b>36.75</b>	<b>36.75</b>	–	<b>19.5</b>	<b>16.75</b>
	46	77	91		699	559	521	578	908	1057	597	308	1245	933	933	–	495	425
<b>PBGM B 26-25-26</b>	<b>150</b>	<b>185</b>	<b>215</b>		<b>23</b>	<b>17.5</b>	<b>25.5</b>	<b>24.75</b>	<b>31.25</b>	<b>37.12</b>	<b>27.88</b>	<b>15.5</b>	<b>47.75</b>	<b>37.75</b>	<b>31</b>	–	<b>15</b>	<b>21.75</b>
	46	84	98		584	445	648	629	794	943	708	394	1213	959	787	–	381	552
<b>PBGM B 28-25-26</b>	<b>200</b>	<b>191</b>	<b>221</b>		<b>25.5</b>	<b>20</b>	<b>25.5</b>	<b>24.75</b>	<b>33.75</b>	<b>39.62</b>	<b>27.88</b>	<b>15.5</b>	<b>47.75</b>	<b>39</b>	<b>34.75</b>	–	<b>17.5</b>	<b>21.75</b>
	61	87	100		648	508	648	629	857	1006	708	394	1213	991	883	–	445	552
<b>PBGM B 22-30-31</b>	<b>250</b>	<b>188</b>	<b>238</b>		<b>19</b>	<b>13.5</b>	<b>25.5</b>	<b>28.75</b>	<b>27.25</b>	<b>33.12</b>	<b>29.88</b>	<b>15.5</b>	<b>52.25</b>	<b>35.75</b>	<b>29</b>	–	<b>11</b>	<b>21.75</b>
	76	85	108		483	343	648	730	692	841	759	394	1327	908	737	–	279	552
<b>PBGM B 18-33-34</b>	<b>200</b>	<b>175</b>	<b>225</b>		<b>14.5</b>	<b>9.5</b>	<b>31.5</b>	<b>31.75</b>	<b>23.75</b>	<b>29.12</b>	<b>33.62</b>	<b>17.75</b>	<b>56.75</b>	<b>33.5</b>	<b>26.75</b>	–	<b>7</b>	<b>27.75</b>
	61	79	102		368	241	800	806	603	740	854	451	1441	851	679	–	178	705
<b>PBGM T 24-23-24</b>	<b>125</b>	<b>168</b>	<b>193</b>		<b>21</b>	<b>15.5</b>	<b>20.5</b>	<b>22.75</b>	<b>29.25</b>	<b>35.12</b>	<b>29.5</b>	<b>12.12</b>	<b>33</b>	<b>36.75</b>	<b>30</b>	<b>31.5</b>	<b>13</b>	<b>16.75</b>
	38	76	88		533	394	521	578	743	892	749	308	838	933	762	800	330	425
<b>PBGM T 30-23-24</b>	<b>150</b>	<b>178</b>	<b>208</b>		<b>27.5</b>	<b>22</b>	<b>20.5</b>	<b>22.75</b>	<b>35.75</b>	<b>41.62</b>	<b>29.5</b>	<b>12.12</b>	<b>33</b>	<b>40.62</b>	<b>36.75</b>	<b>31.5</b>	<b>19.5</b>	<b>16.75</b>
	46	81	94		699	559	521	578	908	1057	749	308	838	1032	933	800	495	425
<b>PBGM T 26-25-26</b>	<b>150</b>	<b>193</b>	<b>223</b>		<b>23</b>	<b>17.5</b>	<b>25.5</b>	<b>24.75</b>	<b>31.25</b>	<b>37.12</b>	<b>32.88</b>	<b>15.5</b>	<b>33.25</b>	<b>37.75</b>	<b>31</b>	<b>37.25</b>	<b>15</b>	<b>21.75</b>
	46	88	101		584	445	648	629	794	943	835	394	845	959	787	946	381	552
<b>PBGM T 28-25-26</b>	<b>200</b>	<b>181</b>	<b>211</b>		<b>25.5</b>	<b>20</b>	<b>25.5</b>	<b>24.75</b>	<b>33.75</b>	<b>39.62</b>	<b>33</b>	<b>15.5</b>	<b>34</b>	<b>39</b>	<b>34.75</b>	<b>35</b>	<b>17.5</b>	<b>21.75</b>
	61	82	96		648	508	648	629	857	1006	838	394	864	991	883	889	445	552
<b>PBGM T 22-30-31</b>	<b>250</b>	<b>196</b>	<b>246</b>		<b>19</b>	<b>13.5</b>	<b>25.5</b>	<b>28.75</b>	<b>27.25</b>	<b>33.12</b>	<b>36.13</b>	<b>15.5</b>	<b>35.5</b>	<b>35.75</b>	<b>29</b>	<b>42.5</b>	<b>11</b>	<b>21.75</b>
	76	88	112		483	343	648	730	692	841	918	394	902	908	737	1080	279	552
<b>PBGM T 18-33-34</b>	<b>200</b>	<b>183</b>	<b>233</b>		<b>14.5</b>	<b>9.5</b>	<b>31.5</b>	<b>31.75</b>	<b>23.75</b>	<b>29.12</b>	<b>38.375</b>	<b>17.75</b>	<b>37</b>	<b>38.38</b>	<b>26.38</b>	<b>44.75</b>	<b>7</b>	<b>27.75</b>
	61	83	106		368	241	800	806	603	740	975	451	940	975	670	1137	178	705

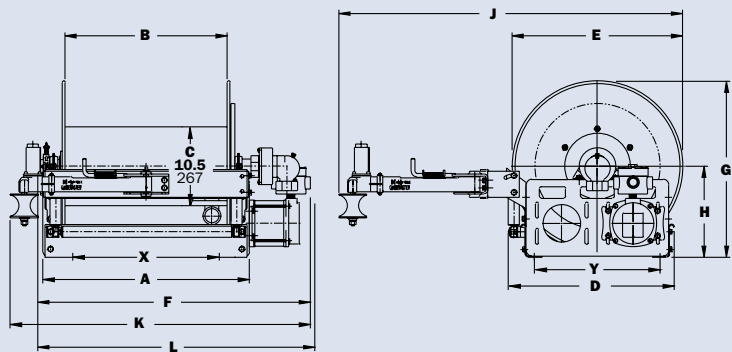
### Notes:

- Specifications subject to change.
- Upon request, reels can be supplied with drum lengths other than shown and with disc sizes in other diameters.
- When ordering power rewind models, prefix model number with:
  - A** = Air Rewind–Supplied with control valve and 25" air hose.
  - E** = Explosion-Proof Electric Rewind (2/3 HP)–Supplied with explosion-proof switch, solenoid, and junction box.
  - HD** = Hydraulic Rewind–Not supplied with control valve.
  - D** = Direct Drive Hydraulic Rewind–Not supplied with control valve.

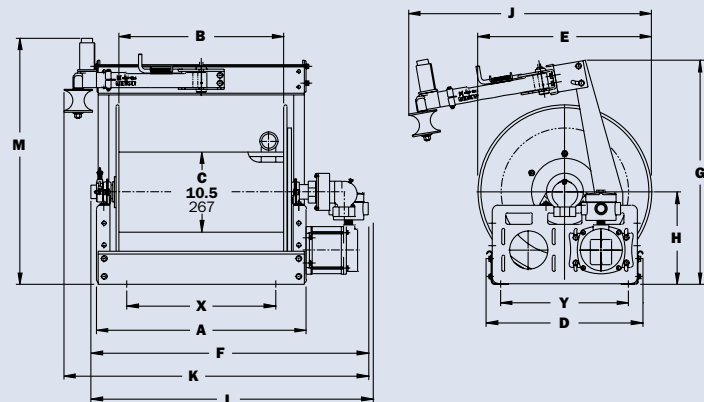
(When ordering **A**, **HD** & **D** power rewind reels deduct 20 lbs. from ship weight).
- Dimension "J" is maximum, with Guidemaster® in operating position. Dimension "K" is maximum, with Guidemaster® in traveling position opposite rewind motor, as shown in dimensional drawing.  
Dimension "L" is maximum, with Guidemaster® in traveling position on same side as rewind motor.
- Guidemaster® weight is approximately 21 lbs. Guidemaster® is shipped as parts.
- Be sure to check dimensions and weights prior to ordering.**
- Consult factory for reels using 1-1/2" I.D. hose.

**NOTICE:** A flexible connector must be used between the inlet pipe and the inlet swivel joint.

\*\*\*X, Y indicate mounting holes.



Series PBGMB



Series PBGMT



# You Can't Buy A Better Reel.

## Find reels for every need.

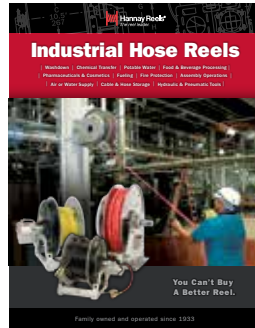
Learn more about all of our reels, including specs, drawings, and even how to select the right reels and accessories for your industry.



### Ordering & Accessory Guide

#### Learn more about:

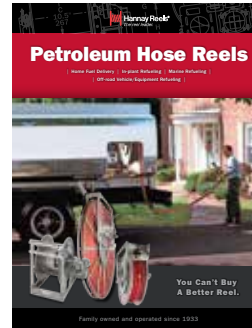
- Selecting the right reel
- Reel components
- Available accessories
- How to spec and order reels and accessories
- Ordering options
- Hannay Reels policies



### Industrial Hose Reels

#### Includes specs and information on:

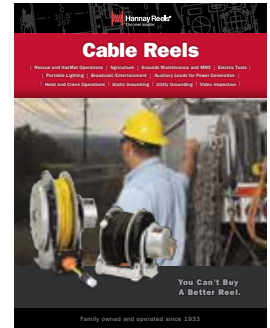
- High pressure spring rewind reels
- Compact manual rewind reels
- Power rewind reels
- Portable storage reels
- Hose assemblies



### Petroleum Hose Reels

#### Comprehensive information on:

- Manual or power rewind reels
- Power rewind reels for inverted installation
- Single wrap power rewind reels
- Guide for inverted installation



### Cable Reels

#### Find out more about:

- Manual and power rewind reels
- Storage reels
- Reels for live electric cable
- Portable reels
- Static and truck grounding reels

View all our reel catalogs online at [hannay.com](http://hannay.com)



Family owned and operated since 1933, Hannay Reels is the world leader in both OEM and aftermarket applications. Hannay offers thousands of standard hose reel and cable reel models, as well as unmatched custom capabilities. We can easily and affordably customize a reel to meet your exact specifications – built to last, delivered fast. Additional catalogs are available through your local Hannay Reels dealer or online at [hannay.com](http://hannay.com).



553 State Route 143 | Westerlo, New York 12193  
Email: [reels@hannay.com](mailto:reels@hannay.com) | [hannay.com](http://hannay.com)



All Hannay reels are constructed of quality heavy gauge steel (optional aluminum or stainless steel also available on most models).

Phone: **518-797-3791**  
Toll Free: **1-877-467-3357**

Domestic FAX: **1-800-733-5464**  
International FAX: **518-797-3259**

Form H-0506-LP REV 8-21