



Application

The 6200 series gauges are widely used to indicate liquid levels of fuels, hydraulic fluids, lube oils, and liquefied gases such as propane, butane, ammonia etc...

The 6200 series gauges are used for tank diameters up to 2000mm and tank pressures up to 25 bar. Float is counterbalanced for low specific gravity fluids. The gauge can be equipped with a direct reading dial, twinsite or switch.

Standard Material of construction

- Head: Aluminum
- Gear housing: plastic
- Centershaft, support tube, float rod: aluminum
- Gears, cross stud, bearings: stainless steel
- Drive magnet: alnico, NdFeB grade 45 –Nickel plated finish
- Float: nitrile rubber
- Gasket: buna-n
- Counterweight: lead

Options

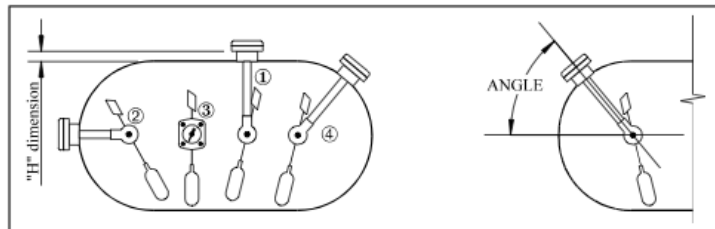
- Head : junior brass head: prefix B
- Float: nyctrophil float (3 bar max.press.) prefix C
- aluminum
- Stainless steel float prefix A
- Gear housing: aluminum
- Plastic or Metal cover for head



Mounting position

Gauges of serie 6200 can be manufactured for any mounting position.

- Vertical :Top mounted 1
- Horizontal :end mounted 2
- Horizontal :Side mounted 3
- Angle : angles mounted 4



(angle for angle mounted gauge is specified from horizontal, positive above horizontal, negative below horizontal)

Certification

Those gauges serie 6200 are in accordance with European Directive PED 97/23/CE and TPED 2010/35/EU for following liquefied gases :

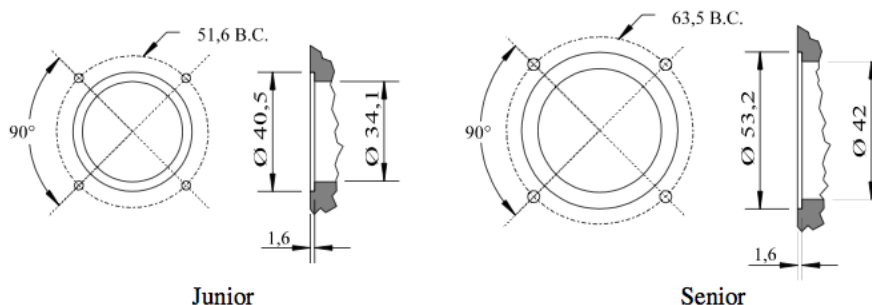
Product	Temperature range	Pressure
Butane, propane, LPG	-40°C / +70°C	25 Bars
NH3	-40°C / +70°C	30 Bars
Refrigerant (except R12B1, R21, R22, R40, R40B1 & R114B2)	-40°C / +70°C	30 Bars
Mapp	-40°C / +70°C	15 Bars
DME	-40°C / +70°C	18 Bars

They have been certified by APRAGAZ, notified body 0029.

Mounting

Junior: (4) screws 1/4"-28*7/8" or M6/25 mm on 51.6 mm bolt circle.

Senior: (4) screws 5/16"-24*7/8" or M8/25 mm on 63.5 mm bolt circle.



Model Number	Mounting	Gauge type	Dial type
6240	Top	Senior	Twinsite: refer to twinsite section for model available
6241	Top	Junior	
6243	Horiz. or angle	Senior	
6244	Horiz. or angle	Junior	
6250	Top	Senior	Switch: refer to switch section for model available
6251	Top	Junior	
6253	Horiz. or angle	Senior	
6254	Horiz. or angle	Junior	
6260	Top	Senior	Side reading
6280	Top	Senior	50 mm dial
6281	Top	Junior	40 mm dial
6283	Horiz. or angle	Senior	50 mm dial
6284	Horiz. or angle	Junior	40 mm dial
6290	Top	Senior	100 mm dial
6293	Horiz. or angle	Senior	100 mm dial (**)

(**) refer to dial section.

Ordering information

A. For cylindrical horizontal tanks, specify:

- gauge model number
- liquid to be gauged with its density, tank design pressure
- working pressure and temperature
- mounting position
- riser dimension (distance between gauge gasket seat and tank wall)
- outside and inside diameter
- shape of dished end for end mounting gauge
- tank drawing is required for gauge angle mounted on dished end of tank

B. For vertical cylindrical tanks, specify;

- same information as in A
- dimension of cylindrical part and dimension of dished ends
- position of gauge from bottom of tank for side mounted gauge; position of gauge from vertical centerline of tank for top mounted gauge
- total tank content
- portion of tank to be gauged

C. For non cylindrical tanks, specify:

- Same information as in A
- tank drawing



Description

New domestic tank gauge intended for Top mounting on above or underground LPG tank of 800, 1000, 1200, 1250 and 1600mm diameter.

Material of construction :

Head	:Aluminum or Brass
Dial	:Polycarbonate with
Aluminum dial plate	
Support tube	:Aluminum
Central rod	:Aluminum
Magnet	:Nickel plated Neodymium
Upper bearing	:Stainless Steel
Gear, gear	
Housing	:Acetal
Float rod and	
Counter balance	:Zinc coated Spring Steel wire
Float	:Nitril Rubber
Float washer	:Stainless Steel
Eyelet	:Brass



Application

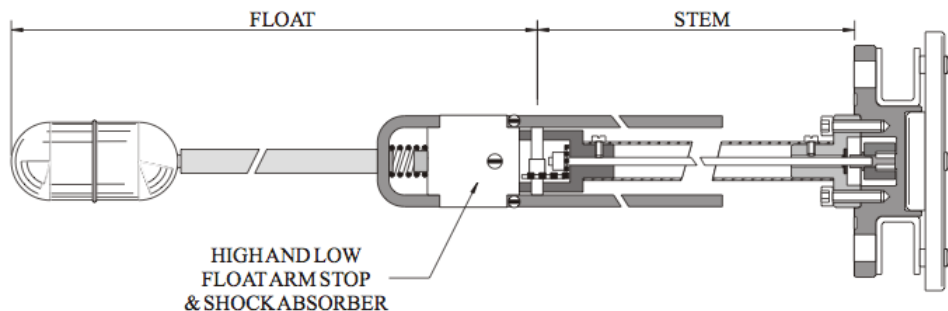
The M6300 series, Magnetel gauges are specially designed for mobile applications such as truck, trailer, container. It incorporates a special spring steel shock absorber, which dampens vibrations and road shocks. As all Rochester Gauges, its dial is easily replaceable with no leakage or loss of pressure.



Model Number and Material of Construction

The material of construction is specified by a number (TRIM N°) which should be specified as a suffix to the model number.

Model N°	Mounting	Dial (5 to 95%)	Material
6339M11	Side, End Angle up to $\pm 45^\circ$	100 mm	As per 6300 series trim 11, shock absorber Spring 631 Stainless Steel
6342M11		200mm	
6339M12		100 mm	As per 6300 series trim 12, shock absorber Spring 631 Stainless Steel
6342M12		200 mm	
6339M16		100 mm	As per 6300 series trim 16, shock absorber Spring 631 Stainless Steel
6342M16		200 mm	



Ordering Information

- Model number and mounting position
- Tank outside and inside diameter, riser dimension
- Product to be gauged
- Working pressure and temperature
- For angle mounted gauge, tank drawing is required

Note: 1) When ordering a straddle mounted Mobile Magnetel, add suffix X to model number

2) Standard stem length for side or end mounting is 610mm. For Magnetel with stem length longer than 610 mm, the stem has to be supported into the tank.

Certification

Those gauges serie 6300 “Magnetel” have been certified by APRAGAZ, notified body under n° 02/BE/329 in accordance with European Directive PED 97/23/EC for :

- LPG, ammonia for maximum pressure 25 bar and temperature -20° to $+60^\circ$ C
- CO₂ for maximum pressure 40 bar and temperature -40° to $+5^\circ$ C
- Others : on request after risk analysis

*Materials and specifications are subject to change without notice.
Pressure ratings subject to change due to temperature and other environmental considerations.

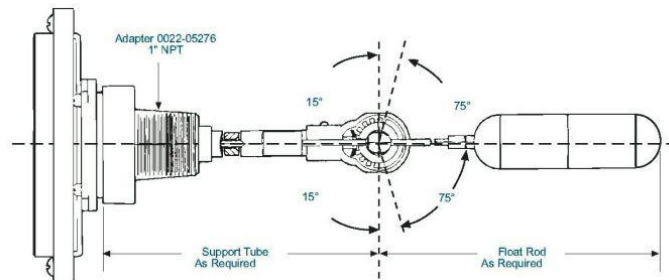


Application

The Eliminator™ float gauge is a direct replacement for 1" NPT rotary-type dip-tube gauge, end or side mounted on LPG and NH3 storage tanks, supplied with direct reading 100 mm (4") dial size. Depending on the application and requirements, the Eliminator™ is available in Aluminum or Stainless Steel construction (see below) and can be used on tanks up to 2200mm diameter.

Conversion

- Remove the two screws of the bezel; put the bezel, screws and dial aside for a moment; remove the mounting screws holding the gauge's head to the adapter.
- Insert the float bulb, float arm, gear housing and counterbalance to the tank.
- Apply Teflon tape or suitable thread sealant to the 1"NPT threads on the adapter.
- Screw the adapter into the tank opening to achieve a leak-tight joint and align the gauge mounting holes in the horizontal plane.
- Using the gasket and four mounting screws supplied, attach the gauge to the adapter (be sure the gauge is right side up: the bracket tab for locating dial chamber should be on the right). Torque the screws evenly to 6,8 Nm (Buna-N gasket) and 16,4 Nm (Teflon/ St. St. spiral wound gasket) using a cross pattern.
- Reattach the 4" dial chamber and bezel to the Senior gauge head brackets.
- If you end up with the dial chamber upside down, you cannot solve the problem m by rotating the bracket; you must rotate the entire gauge 180°.



Model & Construction Material

Tank diameter	Application	Model	Head	Gear Housing	Float Bulb	Gasket
300- 2200	Stationary LPG	P6293	Aluminum	Plastic	Nitril rubber (*)	Buna-N
300- 2200	Mobile LPG	P6293M	Stainless Steel	Plastic	Nitril rubber (*)	Buna-N
300- 2200	Stationary & Mobile NH3	P6293A	Stainless Steel	Plastic	Stainless Steel	Teflon/St. St.
300- 2200	Stationary & Mobile LPG/NH3	P6493	Stainless Steel	Stainless Steel	Stainless Steel	Teflon/St. St.

Ordering Information

Model, inside of diameter of tank, application.

Certification

Those gauges are in accordance with European Directive PED 97/23/CE for LPG, Ammonia for maximum pressure 25 bar and temperature -20 C to +60 C. They have been certified by APRAGAZ, notified body 0029, under n 02/BE/329.

**The Eliminator™ Rotogauge replacement
for LP Gas & NH3 service**

**MADE
IN
EUROPE**



Application

The 6400 series gauges are widely used to indicate the liquid levels of Chemicals and fluid.

The 6400 serie is used for tank diameter/height up to 2000mm and tank pressure up to 30 bars.

The float is counterbalanced for low specific gravity fluids.

The gauge can be equipped with a direct reading dial, Twinsite or switch.

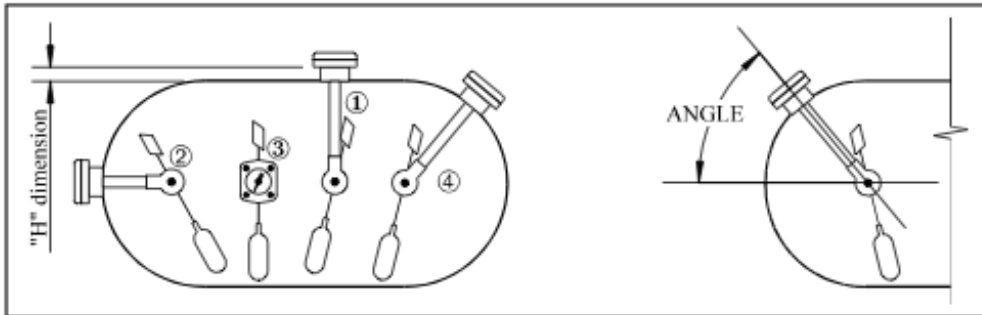
Standard material of construction

- Head: Stainless Steel
- Gear housing: Stainless Steel
- Centershaft, support tube, float rod: Stainless Steel
- Gears, cross stud, bearings: Stainless Steel
- Drive magnet: Teflon Coated Neodymium
- Float: Stainless Steel
- Gasket: Teflon, Stainless Steel spiral wound
- Counterweight: Stainless Steel



Mounting position

Gauges of serie 6400 can be manufactured for any mounting position.



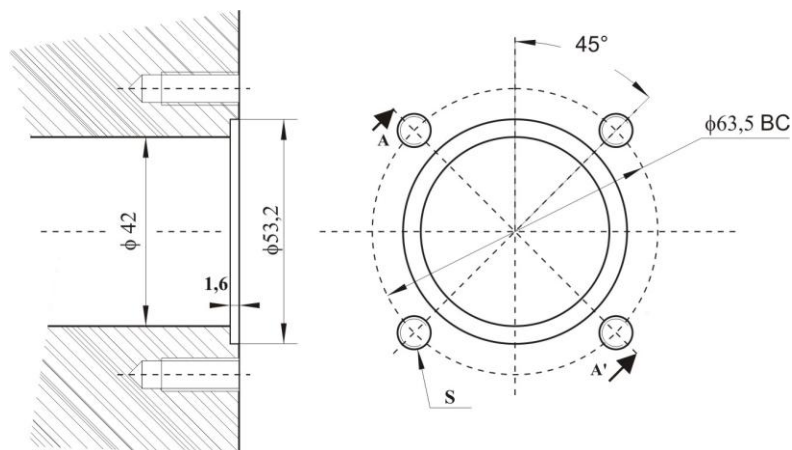
- Vertical : top mounted 1
- Horizontal: end mounted 2
- Horizontal: side mounted 3
- Angle: angle mounted 4
(angle is specified from horizontal, positive above horizontal, negative below horizontal)

**Stainless Steel Magnetic
Liquid-Level Gauges**

**MADE
IN
EUROPE**

Mounting

Senior: (4) screws 5/16"-24*7/8" or M8/25 mm on 63.5 mm bolt circle diameter.



MODEL NUMBER	MOUNTING	DIAL TYPE
6440	TOP	Twinsite
6443	HORIZ. OR ANGLE	Twinsite
6460	TOP	Side reading
6480	TOP	50 mm dial
6483	HORIZ. OR ANGLE	50 mm dial
6490	TOP	100 mm dial
6493	HORIZ. OR ANGLE	100 mm dial

Ordering information

A. For cylindrical horizontal tanks, specify:

- gauge model number
- liquid to be gauged with its density, tank design pressure
- working pressure and temperature
- mounting position
- riser dimension (distance between gauge gasket seat and tank wall)
- outside and inside diameter
- shape of dished end for end mounting gauge
- tank drawing is required for gauge angle mounted on dished end of tank

B. For vertical cylindrical tanks, specify;

- same information as in A
- dimension of cylindrical part and dimension of dished ends
- position of gauge from bottom of tank for side mounted gauge; position of gauge from vertical centerline of tank to be gauged
- total tank content
- portion of tank to be gauged

C. For non cylindrical tanks, specify:

- Same information as in A
- tank drawing